



Control IO-Link Master Add-On Instruction Guide, v4

September 15th, 2023

This document covers the installation and use of Add-On Instruction (AOI) for the Logix Designer software package from Rockwell Automation. This AOI handles acyclic IO-Link commands from an Allen-Bradley PLC through a Control IO-Link Master. This AOI has three User Defined Tag data types.

This IO-Link Master AOI is meant to be used in conjunction with one or more v4 Banner IO-Link Device Parameter Data AOIs.

This document was written using Control 8-EIP IO-Link Master (99608-8). Other Control IO-Link Masters will work as well.

Components

Banner_IOLM_C_v4.L5X

UDT's Packaged with the AOI

Banner_IOLMC_v4

Banner_IOLM_EL_v4

Banner_IOL_Port_v4

NOTE:

This Banner IO-Link Master AOI is useless on its own.

It is intended to be linked to one or more v4 Banner Device Parameter AOIs to function.

Other AOIs Available Separately

Banner has AOI files for other brands of IO-Link Master and for controlling a variety of Banner IO-Link devices. Banner also has AOI files for easily handling Banner device Process Data.

Contents

1. Installation Process 1

2. Configuring the Control IO-Link Master..... 3

3. Configuring the Banner IO-Link Master AOI 4

4. Linking the Master AOI to Device AOIs 10

5. Using the Paired IO-Link Master and Device Parameter Data AOIs..... 11

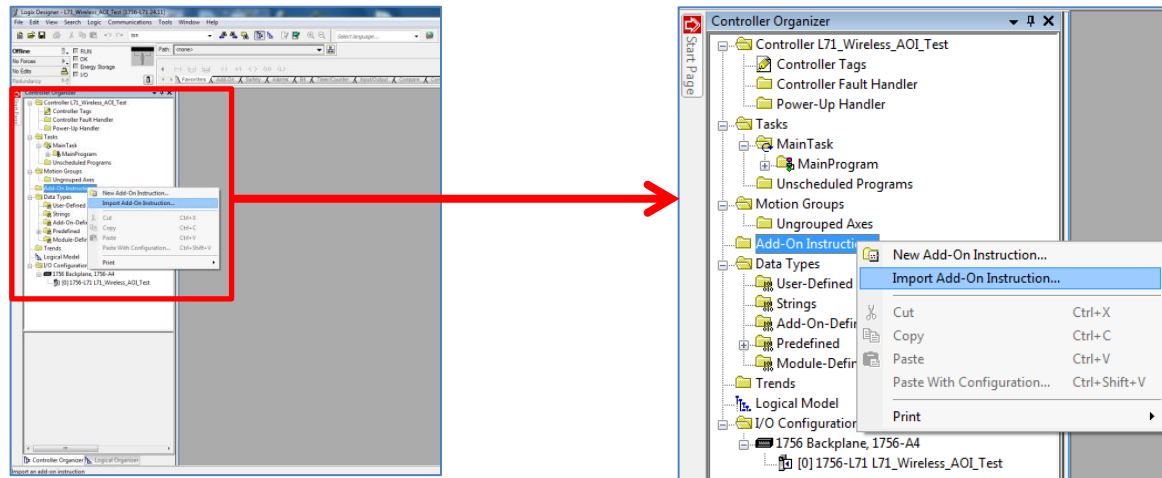
Appendix A Error Handling & AOI Resets..... 12

Appendix B Halt AOI Operation..... 13

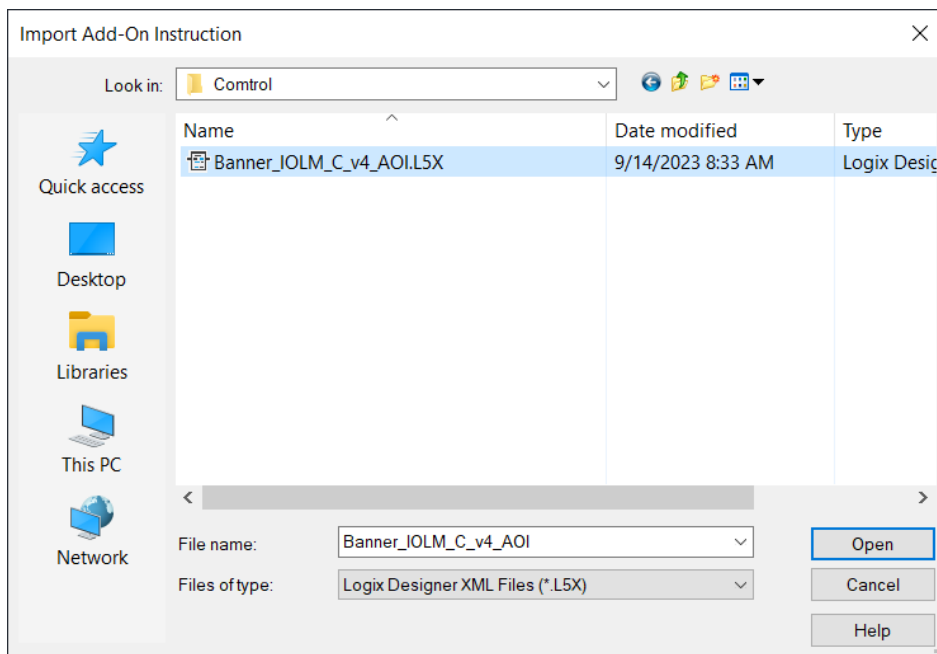
1. Installation Process

This section describes how to install the AOI in Logix Designer software.

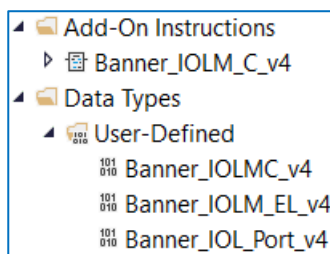
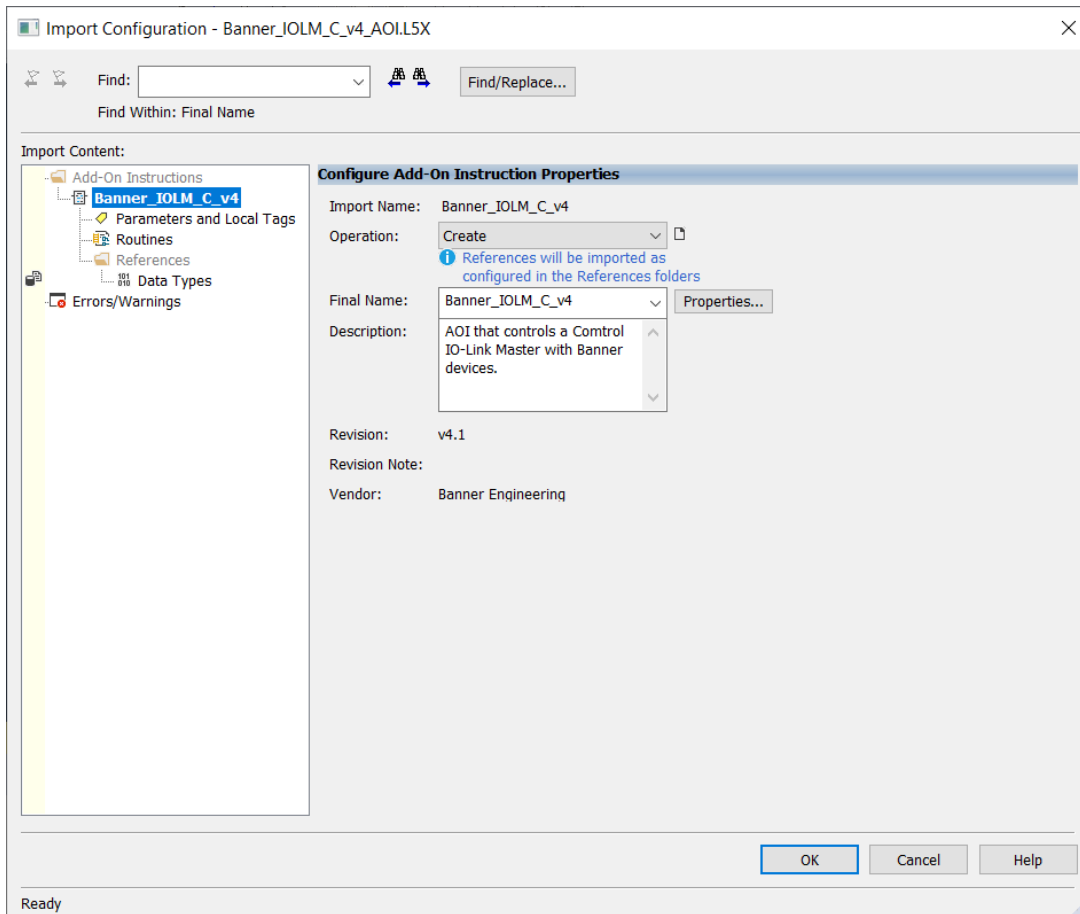
1. Open a project.
2. In the Controller Organizer window, right-click on the Add-On Instruction folder. Select the Import Add-On Instruction option.



3. Navigate to the correct file location and select the AOI to be installed. In this example the "Banner_IOLM_C_v4_AOI.L5X" file will be selected. Click the Open button.



4. The Import Configuration window will pop up. The default selection will create all the necessary items for the AOI. Click the OK button to complete the import process.



5. The AOI is added to the Controller Organizer window and should look like the picture at left.
6. AOI installation into the Logix Designer software complete.

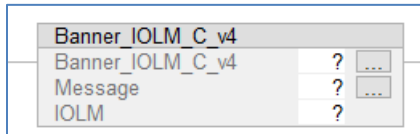
2. Configuring the Control IO-Link Master

Make an EtherNet/IP connection to the Control IO-Link Master.

Create an Ethernet communications module for the Control IO-Link Master device. In this example the EDS file was used, and the connection was named “IOLM1”. The controller tags include Input (I) and Output (O) Assembly Instances. Each Assembly has a corresponding tag array. Creating this Class 1 EtherNet/IP implicit IO connection will provide PLC access to the IO-Link sensor Process Data. Each port on the IO-Link Master is given a dedicated group of I and O registers. See the relevant Control User’s Guide for more information. This connection will also provide a communications pathway for the explicit messages used by the AOI to send IO-Link information to and from the Banner devices.

3. Configuring the Banner IO-Link Master AOI

1. Add the “Banner_IOLM_C_v4” AOI to your ladder logic program. For each of the question marks shown in the instruction we need to create and link a new tag array. The AOI includes a new type of User Defined Tag (UDT): a custom array of tags meant specifically for this AOI.



2. In the AOI, right-click on the question mark on the line labeled “Banner_IOLM_C_v4”. Click New Tag. In this example, we’ll use the name “IOLM1_Status”. The example naming convention accounts for this being the #1 IO-Link Master in our program. More masters could be named IOLM2, IOLM3, etc.

The “EnableIn” and “EnableOut” variables are ladder logic rung status bits automatically added to all AOIs.

- Now we set up the Message used to read and write to devices connected to this IO-Link Master. Right click on the question mark for the “Message” line in the AOI and choose New Tag. In this example we’ll use the tag name “IOLM1_Message”. Click Create.

New Tag [X]

Name:

Description:

Usage:

Type:

Alias For:

Data Type:

Parameter Connection:

Scope:

External Access:

Style:

☐ Constant

☐ Sequencing

☐ Open MESSAGE Configuration

☐ Open Parameter Connections

4. Now create a new tag array for the “IOLM” line in the AOI. Here we used the name “IOLM1”. The tags created here will serve as linkages between the IO-Link Master AOI and the connected Banner device AOI(s). This group of tags also controls the flow of information to and from the master, ensuring that all sensors get a chance to read and write in an orderly fashion.

New Tag

Name:

IOLM1

Create

Description:

Cancel

Usage:

<controller>

Help

Type:

Base

Connection...

Alias For:

Data Type:

Banner_IOLMC_v4

...

Parameter Connection:

Scope:

Test

External Access:

Read/Write

Style:

☐ Constant

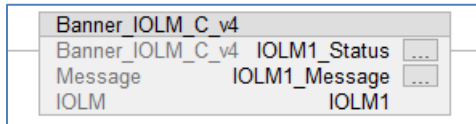
☐ Sequencing

☐ Open Configuration

☐ Open Parameter Connections

◀ IOLM1	{...}
▶ IOLM1.Message_Source_Data	{...}
▶ IOLM1.Message_Destination_Data	{...}
▶ IOLM1.Error_Log	{...}
IOLM1.Error_Write_Retry	0
▶ IOLM1.Num_Error_MSGS	0
IOLM1.IO_Link_Master_Busy	0
IOLM1.AOI_Reset	0
▶ IOLM1.Port_Data	{...}
IOLM1.Halt_Operation	0
IOLM1.AOI_Halted	0

- Now configure “Message”, setting up the Explicit Message that will handle communications between the PLC and the IO-Link Master. Click on the “...” button at the far right of the “Message” line.



- In the Message Configuration window, keep the Message Type “CIP Generic” and the Service Type “Custom”. Enter Service Code of 4b.

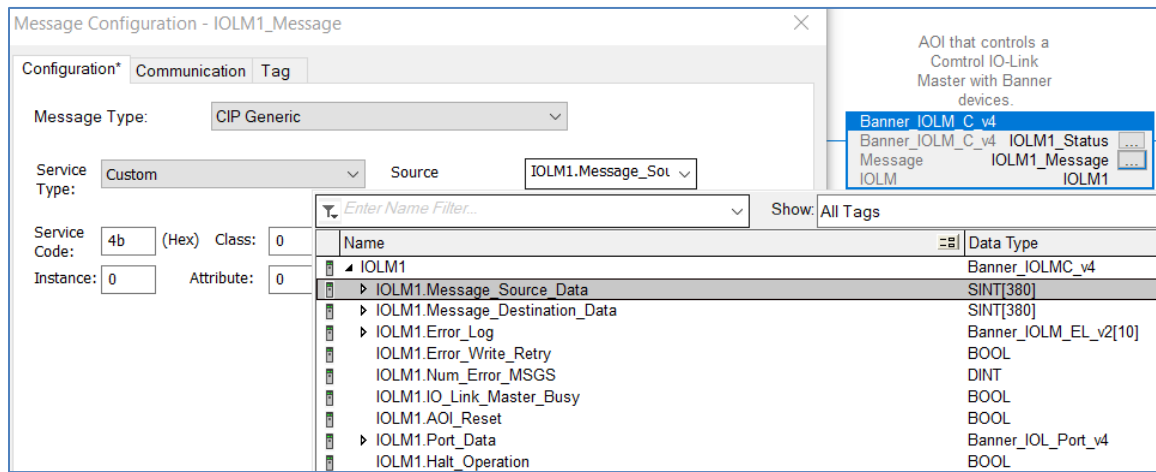
The screenshot shows the 'Message Configuration - IOLM1_Message' dialog box. It has three tabs: 'Configuration*', 'Communication', and 'Tag'. The 'Configuration*' tab is active. It contains the following fields and controls:

- Message Type:** A dropdown menu set to 'CIP Generic'.
- Service Type:** A dropdown menu set to 'Custom'.
- Source:** A dropdown menu.
- Source Length:** A numeric spinner set to '1' with '(Bytes)' next to it.
- Service Code:** A text box containing '4b' with '(Hex)' next to it.
- Class:** A text box containing '0' with '(Hex)' next to it.
- Destination Element:** A dropdown menu.
- Instance:** A text box containing '0'.
- Attribute:** A text box containing '0' with '(Hex)' next to it.
- New Tag...:** A button.

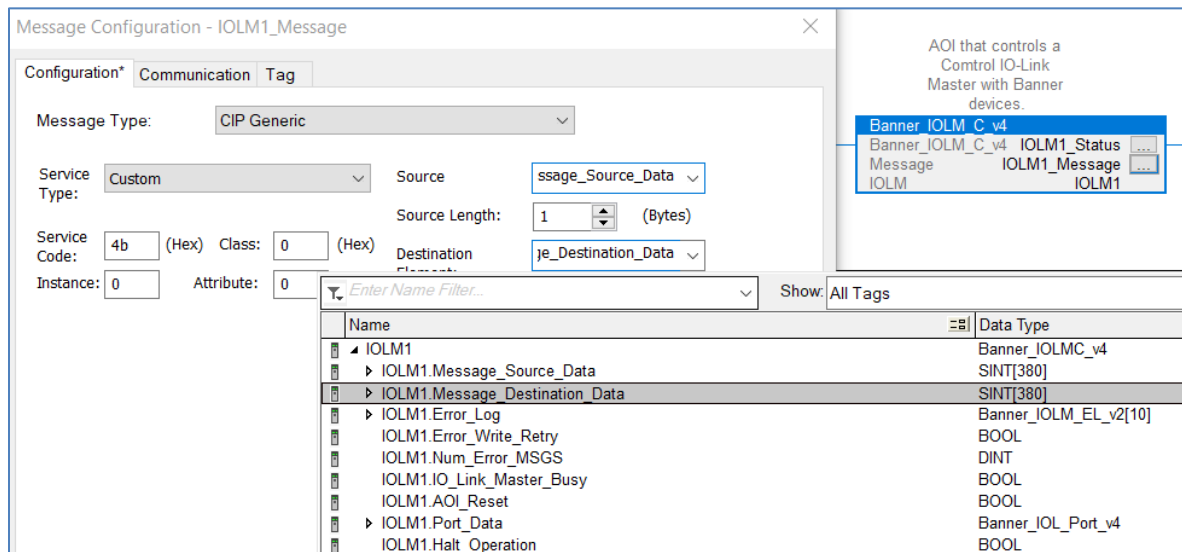
At the bottom of the dialog, there are several options and buttons:

- Enable:** A radio button.
- Enable Waiting:** A radio button.
- Start:** A radio button.
- Done:** A radio button.
- Done Length:** A text box containing '0'.
- Error Code:** A radio button.
- Extended Error Code:** A radio button.
- Timed Out:** A checkbox with a blue plus icon next to it.
- Error Path:** A text box.
- Error Text:** A text box.
- OK:** A button.
- Cancel:** A button.
- Apply:** A button.
- Help:** A button.

7. For the Source Element field, select “IOLM1.Message_Source_Data”.

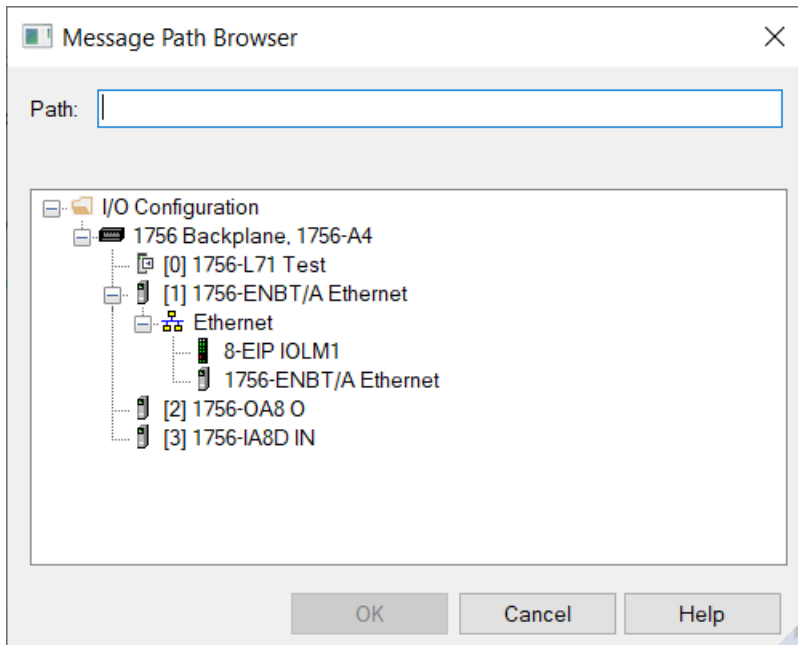


8. For Destination Element, select “IOLM1.Message_Destination_Data”.



9. Now click on the Communication tab, then click the Browse button.

10. Select the IO-Link Master, then click OK to close the Message Path Browser window, then click OK again to close the Message Configuration window.



4. Linking the Master AOI to Device AOIs

Select and install one or more Banner device AOIs. The device AOIs then need to be linked to this IO-Link Master AOI to provide control over IO-Link settings. See the relevant Banner IO-Link device AOI documents for more information.

Set “IOLM1.Port_Data.Port_Controlled” bits to 1 for every port on the IO-Link Master with a connected Banner device and its corresponding Device Parameter Data AOI. In the example below, a single Banner device is connected to port 1. The specific bit used here matches the port’s label on the IO-Link Master. Some masters start with port 0, some start with port 1, depending on manufacturer. Save the program to store these changes in the database.

◀ IOLM1.Port_Data	{...}
◀ IOLM1.Port_Data.Port_Controlled	2
IOLM1.Port_Data.Port_Controlled.0	0
IOLM1.Port_Data.Port_Controlled.1	1
IOLM1.Port_Data.Port_Controlled.2	0
IOLM1.Port_Data.Port_Controlled.3	0
IOLM1.Port_Data.Port_Controlled.4	0
IOLM1.Port_Data.Port_Controlled.5	0
IOLM1.Port_Data.Port_Controlled.6	0
IOLM1.Port_Data.Port_Controlled.7	0
IOLM1.Port_Data.Port_Controlled.8	0

5. Using the Paired IO-Link Master and Device Parameter Data AOIs

The goal is to make the Banner device's IO-Link Index and Subindex values appear in PLC tag arrays as if it were an EtherNet/IP-speaking device. Reading from and writing to the Banner IO-Link device becomes as easy as changing tag values in the PLC. All the complicated work of translating from EtherNet/IP to IO-Link is handled automatically, behind the scenes.

When the program is downloaded to the PLC and the PLC goes into run mode, the IO-Link Master AOI performs a global read for each connected Banner device AOI. The Banner device AOI then creates an archive copy of all writeable parameters for that device. This archive is used to determine whether one of the writeable data tags has been changed. If so, the AOI automatically triggers the process of acyclic writing, using correctly formatted CIP generic message commands.

There are two methods for acyclic reading of Banner device Index and Subindex values.

1. The initial global read, as requested by the IO-Link Master AOI after the PLC program is downloaded and run.
2. Manually via the "Command" variable found in every Device Parameter Data AOI. The "Command" register can be used to force one-time read or write actions, as described in Appendix A of any Banner Device Parameter AOI guide.

Acyclic writes to the IO-Link device are handled by simply changing the relevant tag values in the device's "Write_Data" tag array.

Appendix A

Error Handling & AOI Resets

Whenever an error related to the read or write Message Commands buried inside the AOI occurs, the “Num_Error_MSGS” variable will increment by 1.

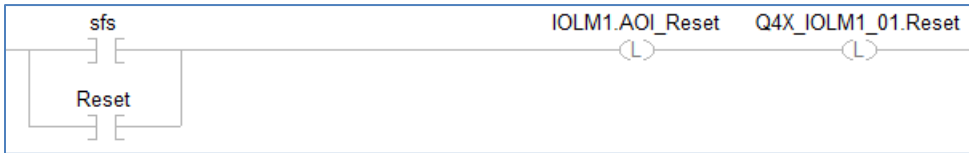
The specific error information will be stored in the “Error_Log” array. This array includes space for 10 errors. Each entry records whether the error occurred on a read (0) or write (1) attempt and which port on the IO-Link Master and Index on the IO-Link Device were involved. Once the error is logged, the AOI moves on to the next task. An example of an Error_Log entry is shown below, where an IO-Link Master AOI failed to write to Index 60 on the IO-Link device connected to port 1.

▲ IOLM1.Error_Log	{...}
▲ IOLM1.Error_Log[0]	{...}
▶ IOLM1.Error_Log[0].RW	1
▶ IOLM1.Error_Log[0].Port	1
▶ IOLM1.Error_Log[0].Index	60

Potential causes for errors include incorrect setup of the Device or Master AOI (wrong port number for device, wrong Port_Controlled array for master, or incorrect settings for the Master message commands), having the sensor physically connected to the incorrect port on the Master, or having no power to the IO-Link Master.

The “AOI_Reset” variable is used to restart the AOI from scratch. To initiate this reset, write a “1” to this register. The reset will occur, then turn the variable back to “0” automatically.

Best practices suggest adding a rung to your ladder logic program that resets all IO-Link Master and Device Parameter AOIs on the first scan. The example below shows one IO-Link Master, called IOLM1, and one connected Q4X having their respective AOIs being reset in this way.



Appendix B

Halt AOI Operation

At times it may be desirable to halt the IO-Link Master AOI. This is especially true if you are using AOIs made by other manufacturers, particularly those made by the manufacturer of the IO-Link Master itself. The “Halt_Operation” variable can be used to stop the action of the Banner IO-Link Master AOI, allowing other AOIs to function correctly. When the other AOIs are done, the Banner IO-Link Master AOI can be reactivated.

◀ IOLM1	{...}
▶ IOLM1.Message_Source_Data	{...}
▶ IOLM1.Message_Destination_Data	{...}
▶ IOLM1.Error_Log	{...}
IOLM1.Error_Write_Retry	0
▶ IOLM1.Num_Error_MSGS	0
IOLM1.IO_Link_Master_Busy	0
IOLM1.AOI_Reset	0
▶ IOLM1.Port_Data	{...}
IOLM1.Halt_Operation	0
IOLM1.AOI_Halted	0